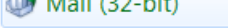
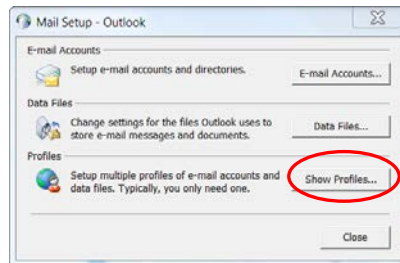


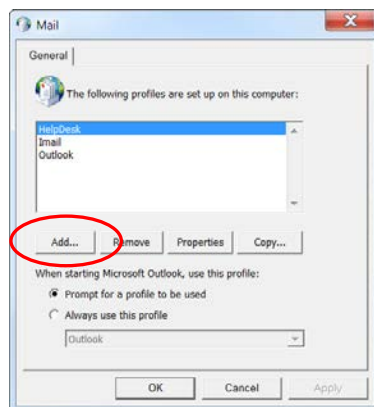
Iml Outlook Settings

Outlook can be setup to view your Iml email account instead of using the web interface.

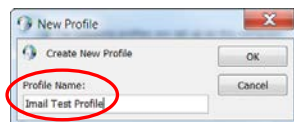
1. In the control panel, click on mail. 
2. In the Mail Setup – Outlook window, select *Show Profiles...*



3. In the Mail window, click on Add

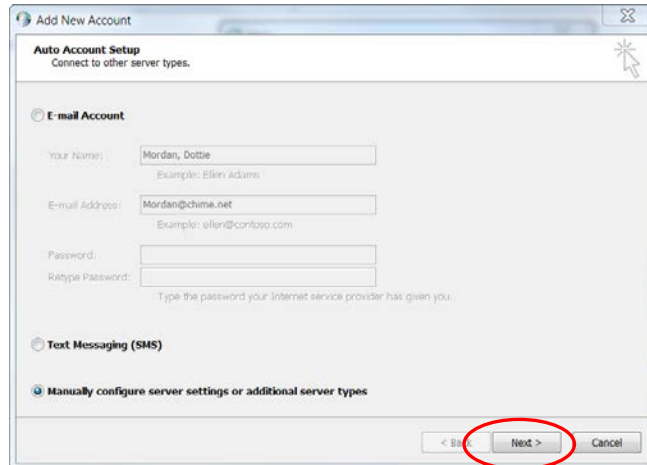


4. In the New Profile window, enter a profile name to identify your email account and click *OK*

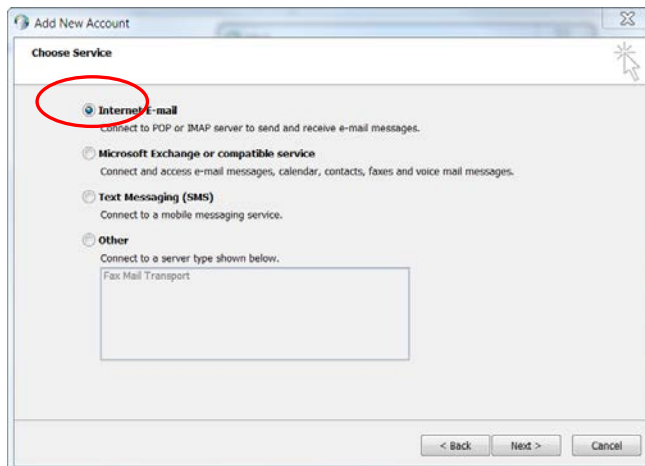


Iml Outlook Settings

5. In the Add New Account window, Select *Manually configure server settings or additional server types*, then click on *Next*.



6. In the Add New Account Window, make sure *Internet E-Mail* is selected. Click on *Next*.



Iml Outlook Settings

7. Enter the following information:

Your Name:

E-Mail Address:

Account Type: *IMAP*

Incoming Mail Server:
jupiter.chime.net

Outgoing mail server (SMTP):
jupiter.chime.net

User Name: *your email address*

Password: *your password, select Remember password if you do not want to keep entering the password. Click on More Settings:*

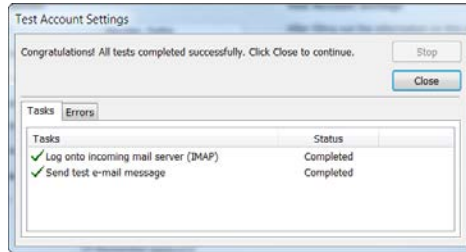
Go to the Outgoing Server and select *My outgoing server (SMTP) requires authentication* and click *OK*. Then click on *Next*

Note: You will not be able to send email if this is not selected.

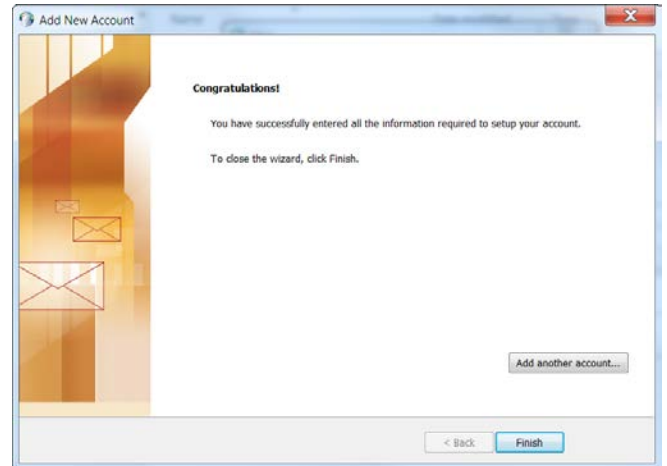
8.

Imlail Outlook Settings

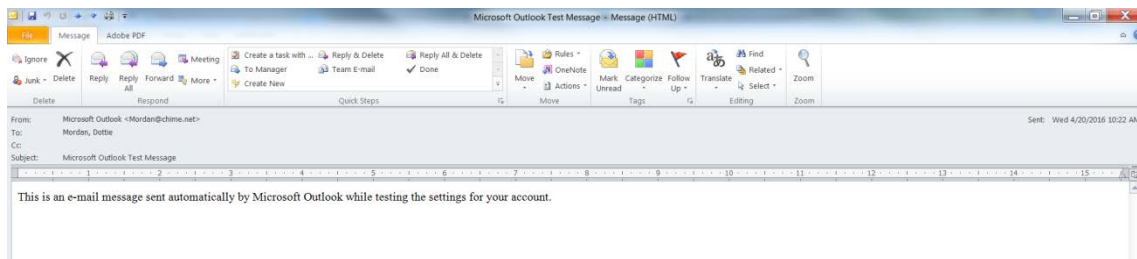
9. If you successfully setup your email account, you will get a Test Account Settings window.



and



You will also get a test message to Outlook to indicate that your account has been successfully set up.



If you need additional assistance, please contact the ChimeNet HelpDesk.

Email: helpdesk@chime.org; Phone: 203-294-7394; Fax: 203-284-9318.